

TOILET ROOM GRAB BARS

H2-105



SUTTER HEALTH - PHYSICAL ACCESS COMPLIANCE

H2 Number

AUTHOR: BILL ZELLMER

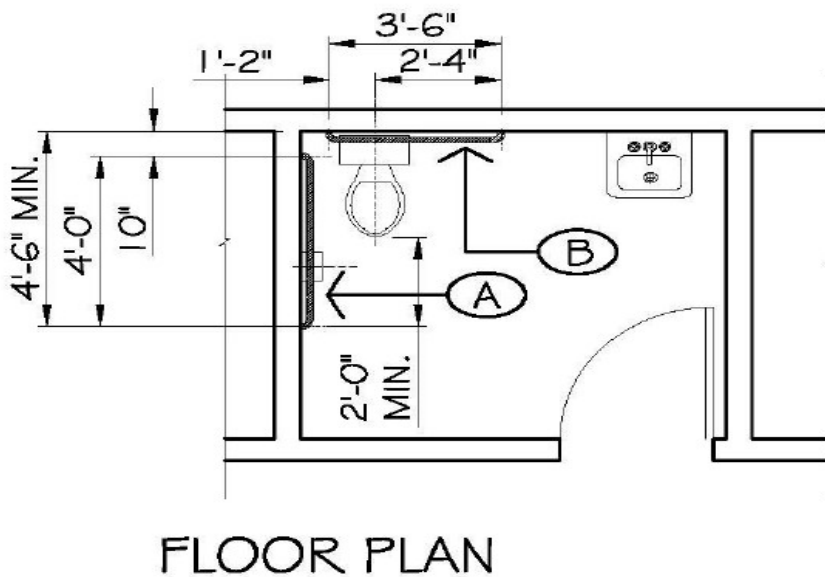
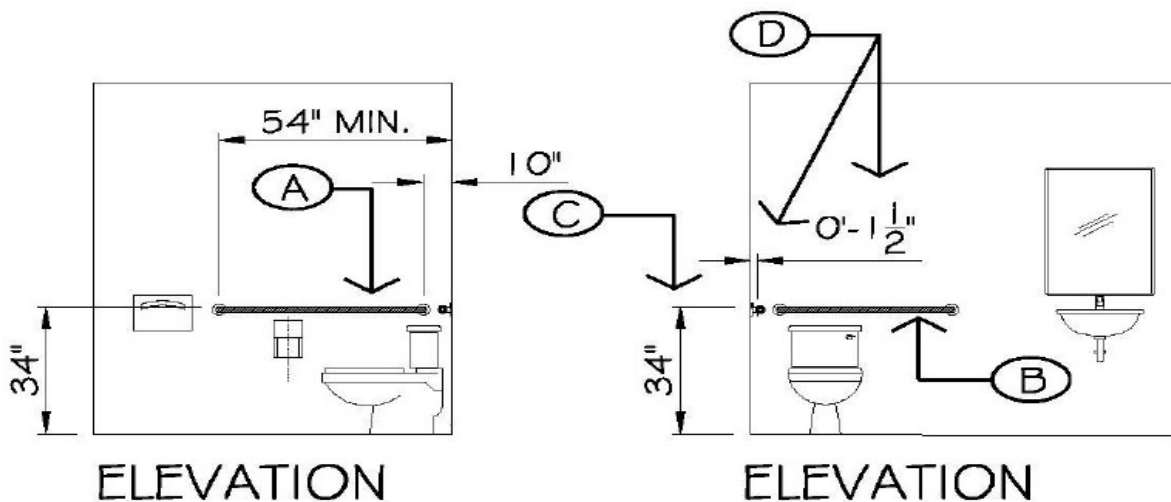
ISSUE DATE: 7-28-2015

APPLICABLE CODES: 2010 ADA & 2019 CBC

REVISED DATE: 10-16-2019

CBC CODE SECTIONS: 11B-604.5 AND 11B-609

- A: SIDE GRAB BAR: RECOMMEND 4' LONG X 1½" O.D. GRAB BAR, PLACED W/ 'NEAR' END AT 10" FROM BACK WALL. CODE REQUIRES MIN. 3'-6" LONG G.B., W/ FAR END AT 54" MIN. FROM BACK WALL, AND FAR END 2' BEYOND FRONT END OF TOILET. NOTE: MEASUREMENTS TO BE TAKEN FROM CENTER OF THE ROUND BAR.
- B: REAR GRAB BAR: RECOMMEND 3'-6" LONG X 1½" O.D. GRAB BAR. PLACED W/ SHORT END AT 1'-2" FROM CENTERLINE OF TOILET. CODE REQUIRES: MIN. 3'-0" LONG G.B. W/ SHORT END MIN. 12" FROM CENTERLINE OF TOILET AND WIDE END MIN. 2'-0" FROM CENTERLINE OF TOILET.
- C: RECOMMEND SETTING TOP OF G.B. AT 34" ABOVE FLOOR (2'-10")
CODE REQUIRES THAT TOP OF G.B. BE SET BETWEEN 33" AND 36" ABOVE FLOOR.
- D: CODE REQUIRES THAT G.B. BE SET WITH A 1½" GAP FROM WALL TO EDGE OF GRAB BAR.



FLOOR PLAN