

TOILET SEAT COVER DISPENSER

H2-102

SUTTER HEALTH - PHYSICAL ACCESS COMPLIANCE

H2 Number

AUTHOR: BILL ZELLMER

ISSUE DATE: 7-28-2015

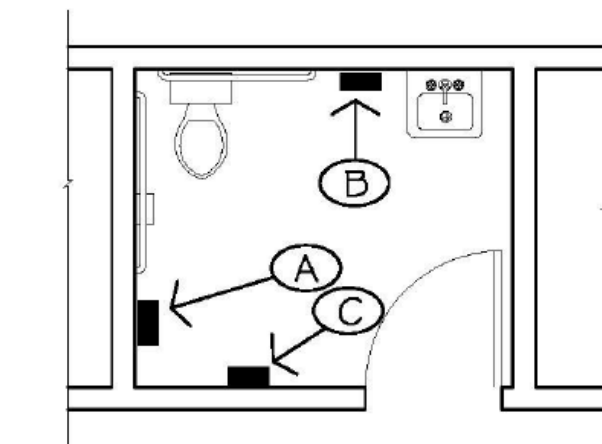
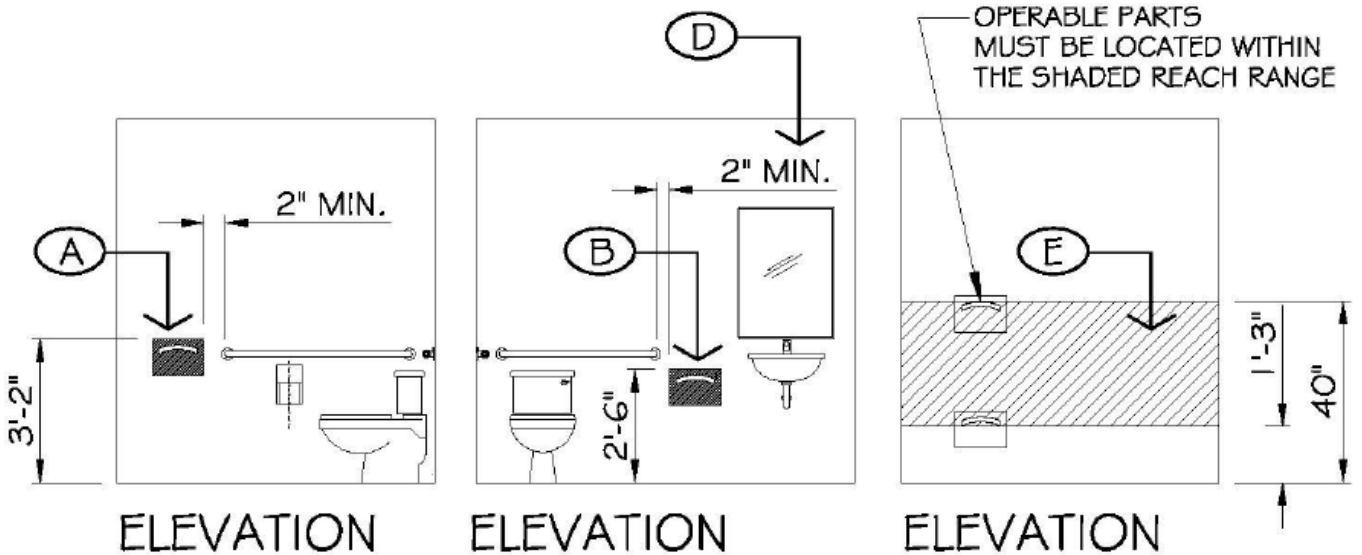
APPLICABLE CODES: 2010 ADA & 2019 CBC

REVISED DATE: 10-16-2019

CBC CODE SECTIONS: 11B-603.5 AND 11B-604.3.2



- A: RECOMMEND PLACING DISPENSER 2" BEYOND GRAB BAR W/ TOP OF "DISPENSER" AT 3'-2" ABOVE FLOOR. CODE REQUIRES THAT THEY BE PLACED WITH OPERABLE PARTS AT 40" MAXIMUM HEIGHT.
- B: ALTERNATE LOCATION: PLACE THE DISPENSER BETWEEN TOILET AND LAVATORY, W/TOP SET AT 2'-6" ABOVE FLOOR. CODE REQUIRES THAT THEY BE PLACED WITH OPERABLE PARTS AT 40" MAXIMUM HEIGHT.
- C: ALTERNATE LOCATION: PLACE THE DISPENSER ON ANOTHER WALL, W/ TOP SET AT 3'-2" ABOVE FLOOR.
- D: MAINTAIN 2": BETWEEN TOP AND EDGES OF DISPENSER AND GRAB BAR.
CODE REQUIRES THAT THERE BE A MINIMUM OF 1 1/2" BETWEEN A GRAB BAR AND ANY OTHER ELEMENT.
- E: ALLOWABLE RANGE: ALL OPERABLE PARTS MUST BE WITHIN A 15" MIN. AND 40" MAX. HEIGHT ABOVE THE FLOOR.



FLOOR PLAN