

# TOILET ROOM MIRROR

H2-106

SUTTER HEALTH - PHYSICAL ACCESS COMPLIANCE

H2 Number

AUTHOR: BILL ZELMER

ISSUE DATE: 7-28-2015

APPLICABLE CODES: 2010 ADA & 2019 CBC

REVISED DATE: 10-16-2019

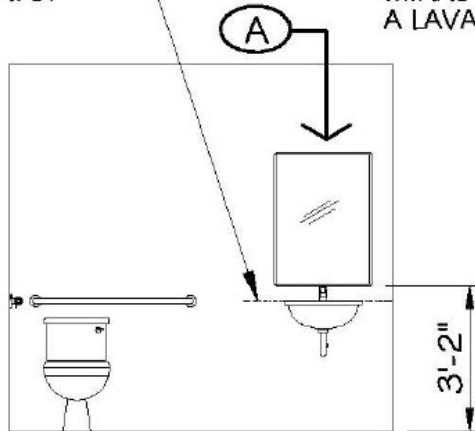
CBC CODE SECTIONS: 11B-603.3



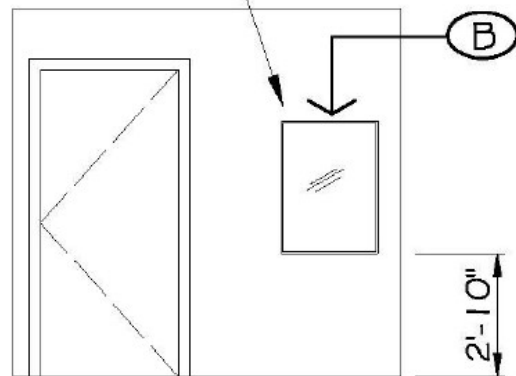
- A: MIRROR AT LAVATORY OR COUNTER: RECOMMEND PLACING BOTTOM OF 'REFLECTIVE SURFACE' OF MIRROR AT 3'-2" (38") ABOVE FLOOR.  
CODE REQUIREMENTS: REFLECTIVE SURFACE OF MIRROR SHALL BE SET A MAXIMUM OF 3'-4" (40") ABOVE FLOOR.
- B: MIRROR AT LOCATIONS OTHER THAN ABOVE A LAVATORY OR COUNTER: RECOMMEND PLACING BOTTOM OF REFLECTIVE SURFACE OF MIRROR AT 2'-10" (34") ABOVE FLOOR.  
CODE REQUIRES: REFLECTIVE SURFACE OF MIRROR SHALL BE SET A MAXIMUM OF 2'-11" (35") ABOVE THE FLOOR
- C: RECOMMENDED MINIMUM MIRROR DIMENSION: 2'-0" WIDE X 3'-6" TALL.

TOP OF LAVATORY OR  
TOP OF COUNTERTOP

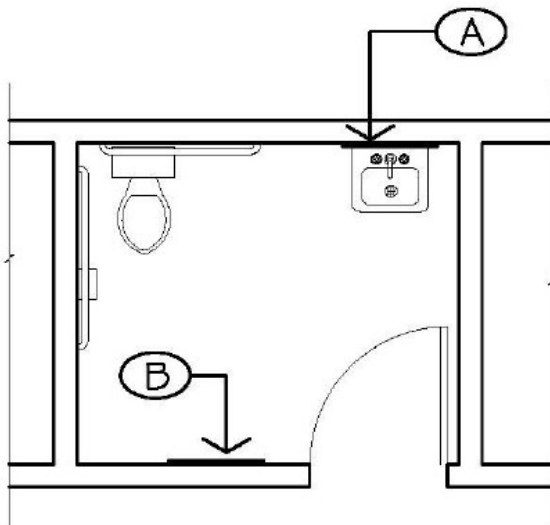
IN THIS EXAMPLE, THE  
MIRROR IS NOT SET ABOVE  
A LAVATORY OR COUNTER



ELEVATION



ELEVATION



FLOOR PLAN