

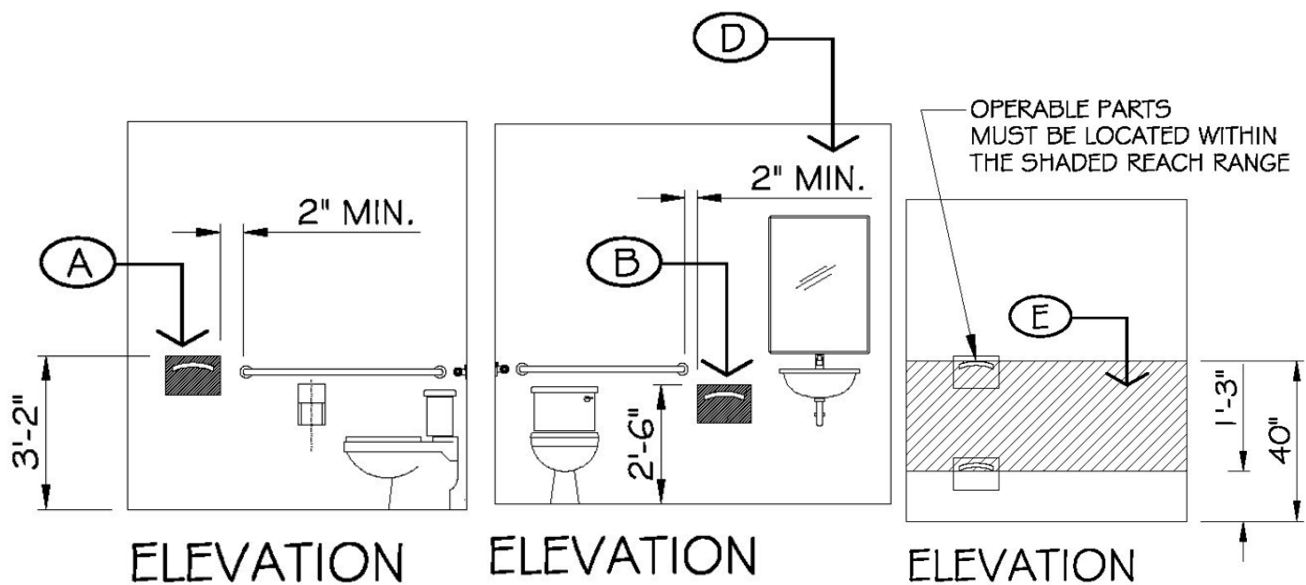
# Toilet Seat Cover Dispenser

H2-102



SUTTER HEALTH – PHYSICAL ACCESS COMPLIANCE			H2 NUMBER
AUTHOR:	BILL ZELLMER	ISSUE DATE:	7-28-2015
APPLICABLE CODES:	2010 ADA & 2013 CBC	REVISIONS:	N/A
CBC CODE SECTIONS:	11B-603.5 AND 11B-604.3.2		

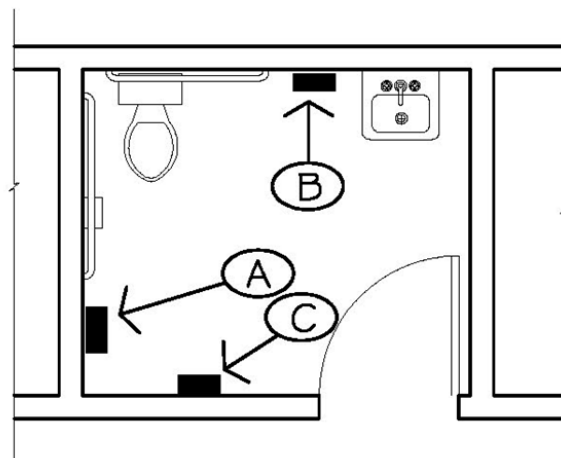
- A: RECOMMEND PLACING DISPENSER 2 INCHES BEYOND GRAB BAR WITH TOP OF DISPENSER AT 3 FEET TO 2 INCHES ABOVE FINISHED FLOOR. CODE REQUIRES THAT THEY BE PLACED WITH OPERABLE PARTS AT A 40 INCH MAXIMUM HEIGHT.
- B: ALTERNATE LOCATION: PLACE THE DISPENSER BETWEEN TOILET AND LAVATORY, WITH TOP SET AT 2 FEET TO 6 INCHES ABOVE FLOOR. CODE REQUIRES THAT THEY BE PLACED WITH OPERABLE PARTS AT A 40 INCH MAXIMUM HEIGHT.
- C: ALTERNATE LOCATION: PLACE THE DISPENSER ON ANOTHER WALL, WITH TOP SET AT 3 FEET TO 2 INCHES ABOVE FLOOR.
- D: MAINTAIN 2 INCHES BETWEEN TOP AND EDGES OF DISPENSER AND GRAB BAR. CODE REQUIRES THAT THERE BE A MINIMUM OF 1 ½ INCHES BETWEEN A GRAB BAR AND ANY OTHER ELEMENT.
- E: ALLOWABLE RANGE: ALL OPERABLE PARTS MUST BE WITHIN A 15 INCH MINIMUM AND 40 INCH MAXIMUM HEIGHT ABOUT THE FLOOR.



ELEVATION

ELEVATION

ELEVATION



FLOOR PLAN