

SANITARY NAPKIN DISPOSAL UNIT

H2-111



SUTTER HEALTH - PHYSICAL ACCESS COMPLIANCE

H2 Number

AUTHOR: BILL ZELLMER

ISSUE DATE: 10-16-2019

APPLICABLE CODES: 2010 ADA & 2019 CBC

REVISIONS: N/A

CBC CODE SECTIONS: 11B-604.7.2 AND 11B-309.4

- A: RECOMMEND MOUNTING SANITARY NAPKIN DISPOSAL UNIT ON THE SIDEWALL BETWEEN THE REAR WALL OF THE TOILET AND THE TOILET PAPER DISPENSER, ADJACENT TO THE TOILET PAPER DISPENSER.
- B: RECOMMEND MOUNTING SANITARY NAPKIN DISPOSAL UNIT BELOW GRAB BAR WITH THE OPENING OF THE "DISPOSAL UNIT" 19" MINIMUM ABOVE THE FINISHED FLOOR.
- C: MAINTAIN 2" BETWEEN TOP EDGES OF DISPOSAL UNIT AND GRAB BAR.
CODE REQUIRES THAT THERE BE A MINIMUM OF 1 1/2" BETWEEN A GRAB BAR AND ANY OTHER ELEMENT.

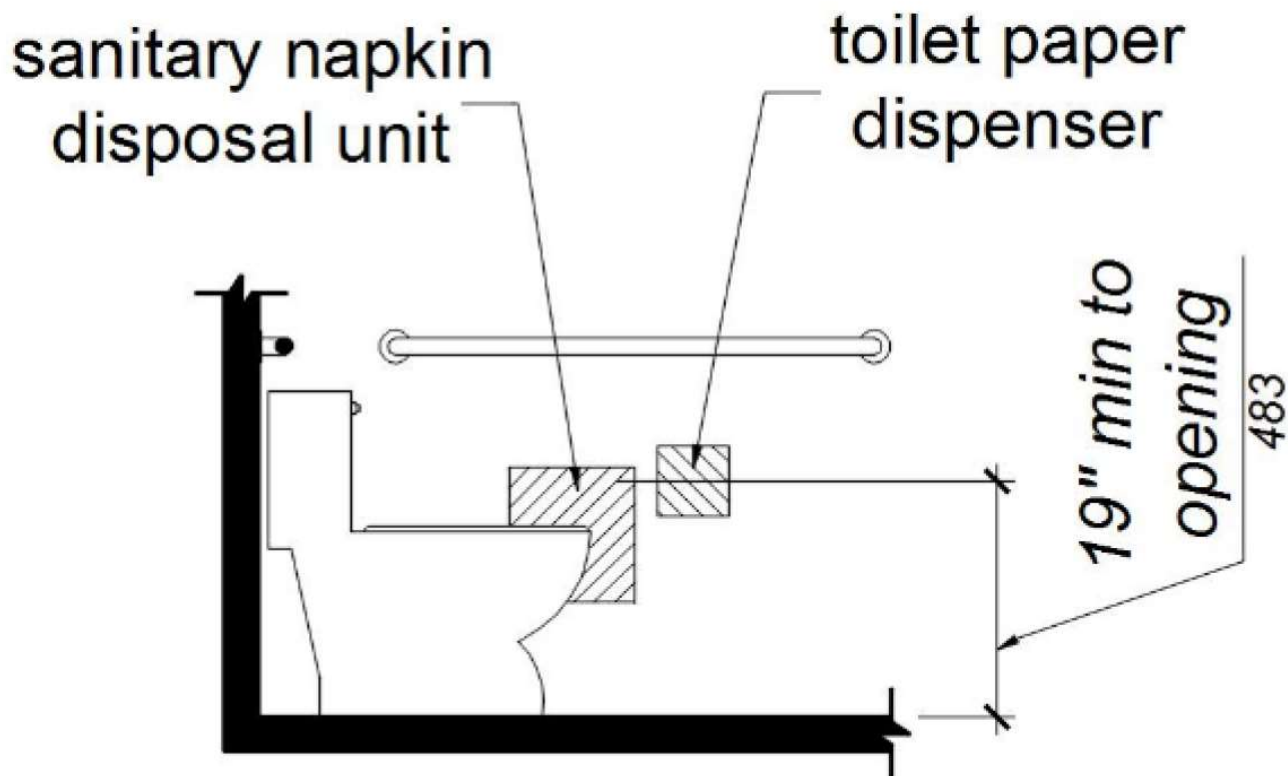


Figure 11B-604.7.2
Disposal Unit Location