

Taken to Access

Question of the Month:

Q. Our project successfully completed the PAC Accessibility Plan Reviews (APR) and Monitoring processes. So, are we done with ADA compliance?

R. No. First, congratulations on completing the PAC APR and Monitoring processes! Second, Sutter Health is obligated to provide equal access to patient services of which physical access is only a part. The *operations* of the facility also needs to be ADA compliant. Operational examples like access to sign language services.

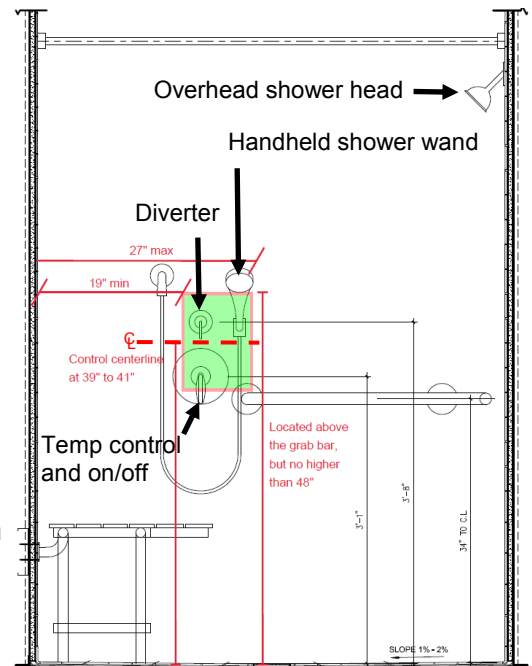
What does this mean to you? Please ensure that the ADA Coordinator is part of the operational team that is involved in the project. See [list](#) for each affiliate's ADA Coordinator.

MAY SHOWERS ... CONTROLS

One of the most complex accessible component is the accessible shower. CBC 11B-608.5.2 states that “operable parts of controls and faucets shall be installed ... no higher than 48 inches above the shower floor, with their centerline at 39 inches to 41 inches above the shower floor.” Showers can have a diverter that redirects water between the hand-held shower wand and the overhead shower head. What requirements do the diverter need to comply with?

There was a broad consensus among the access specialists that compliance with the 39” – 41” height requirement can be achieved in a couple of different ways:

1. Consider the diverter as not a part of the shower control assemblies that are subject to the 39” – 41” requirement, but only to the 48” operable part requirement, or
2. Consider the diverter and shower on-off / hot-cold knob as ONE assembly, which must have its center between 39” and 41” (see green box in diagram above) and the highest operable part below 48”. This is Sutter’s preference.



Credit: Devenney Group

COFFEE MAKER COMPLIANCE

Thanks to the CPMC Van Ness Geary and St. Luke’s project teams for going the extra mile to ensure that the people with disabilities are well caffeinated. The project managers researched extensively to find a coffee maker where the *operable parts* (including any buttons and hot water dispenser) are below 48” while on top of 34” high casework as well as being reasonably priced, easy to maintain and, most importantly, provide good tasting coffee! The teams are leaning towards the Curtis G3 Thermal Decanter Coffee Brewing System #D60GT12A000 (from [Canteen](#) who has the Strategic Sourcing contract) with some modifications to meet ADA compliance.

48” Max
AFF



Of course, you can consider other solutions of providing equivalent access like a separate source of coffee/hot water or less than 34” high casework.